

TD | TOUCH
DRIVE

TD | TOUCH
DRIVE
FEEL THE DIFFERENCE

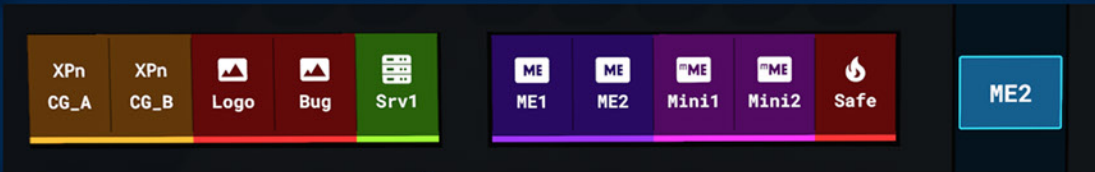


ROSS

EVOLUTION, NOT REVOLUTION

TouchDrive™ is another step in the success story that is Carbonite. As production requirements have grown, Carbonite has evolved to keep pace. TouchDrive™, the latest step in this evolution, is a tribute to the feedback from thousands of Technical Directors and Vision Mixers around the world.





PRODUCTION CONTROL REDEFINED

Complemented by Touch

Modern production switchers are more powerful and feature-rich than ever, and they require control panels that provide access to these functions efficiently. Rather than complicating operations, we have designed a control panel that provides access to these functions in a clear and concise manner. Every hi-res LCD display uses touch technology that keeps the panel footprint manageable and greatly enhances efficiency.

- Gestures - Swipe to select functions and parameters
- TouchMap™ - Create bus maps with absolute ease
- Memory Inclusions - Know which ME/MiniME/Canvas are included in the memory recall
- Instant visual feedback enhances operator confidence

Clear Visual Cues

Using a combination of rich color, clear text and touch displays, TouchDrive™ provides you with all the pertinent information you need during production. Whether you are configuring bus maps, assigning button functions, delegating key buses or selecting your next transition type, you can operate with absolute confidence.



OPERATIONAL EFFICIENCY

Surprisingly Familiar

Despite its many innovations and improvements, if you have switched on a Carbonite or Carbonite Black panel, you will feel right at home on TouchDrive™. It gives you what you are used to, and so much more. We wanted to be sure our thousands of loyal customers would still enjoy the “Carbonite experience”.

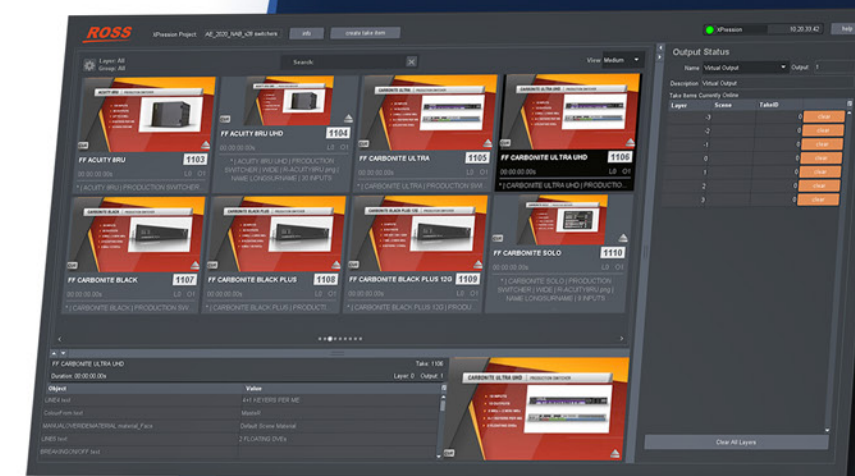
Built-in Dashboard

A separate Dashboard computer is no longer required. An optional industrial grade 15.6” touchscreen is available that draws power directly from the panel for simpler cabling.

Unprecedented Control

DashBoard provides tight integration between TouchDrive™ and all your other production devices. The Live Assist DashBoard screen auto follows panel operations. TouchDrive™ does not just control your switcher – it allows you to have the entire production at your fingertips.

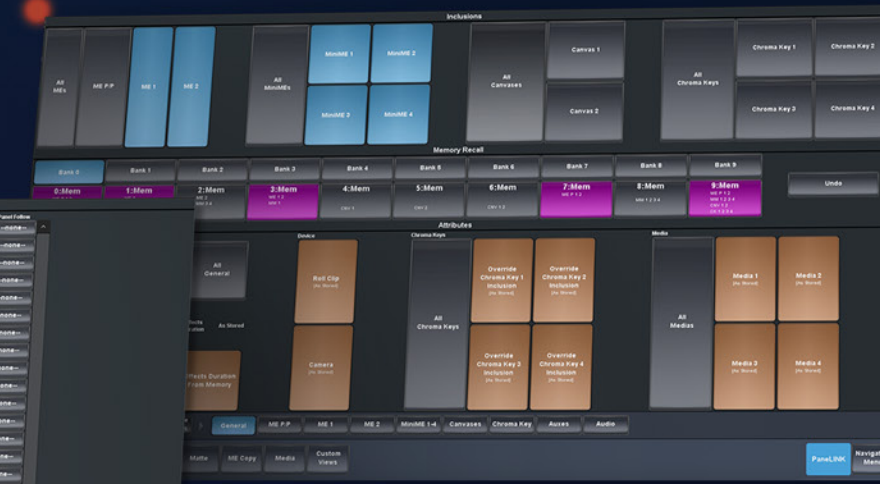
With TouchDrive™, you can playout XPression graphics, trigger Tria+ clips or switch Ultrix crosspoints with ease. In fact, virtually any device can be controlled by DashBoard and integrated into TouchDrive™. This unprecedented consolidation of device control is simple and efficient – another Ross innovation.



XPRESSION



INPUT CONFIGURATION



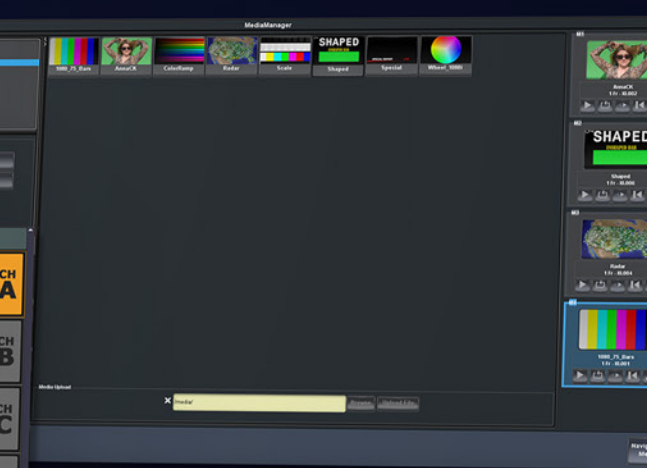
MEMORIES



SOFTPANEL



TRIA+



MEDIA MANAGER

KEY BENEFITS

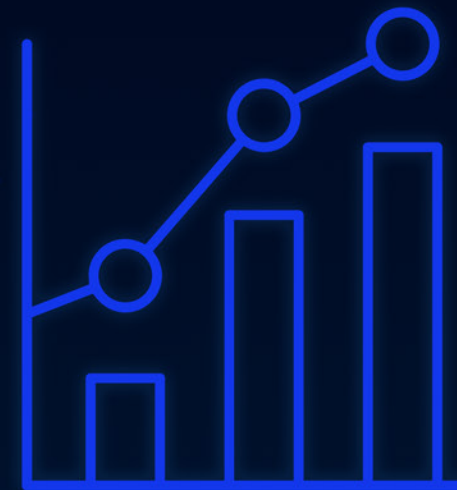


CREATIVE

TouchDrive™ allows you to produce your shows confidently, with controls that augment your capabilities instead of getting in your way.

High-resolution, rich color touch displays provide clear visual cues, boosting your confidence during operation. The ergonomic design reduces fatigue so you can focus your energy on producing a dynamic show.

With easily accessible Custom Control macros, auto-follow DashBoard panels, and tightly integrated device controls, complex production operations are easily accomplished with TouchDrive™.



BUSINESS

Improved operational efficiency and reduced setup time will boost revenue while keeping costs down.

TouchDrive™ comes in various panel sizes, from the ultra portable TD1C to the uncompromising TD3S. Choose the right one for your budget and production requirement.

TouchDrive™ works with Carbonite Ultra, Carbonite Black and Graphite systems, making it a sound investment for today and tomorrow.

Enjoy peace of mind as TouchDrive™ is backed by Ross Video's industry-leading support.



TECHNICAL

TouchDrive™ is easy to set up and operate. The panel's built-in DashBoard eliminates the need for an external computer system.

Intuitive interfaces and auto-follow menus make it easy for operators of all levels. Confidently control the video switcher and other devices such as Tria video servers and XPression graphics systems. This allows confident delivery of complex, multi-device driven productions.

If you require assistance, technical support by phone or email is available 24/7, and it is free forever! Visit support.rossvideo.com for more info.

MEET THE FAMILY



COMPATIBLE WITH

CARBONITE BLACK
CARBONITE BLACK PLUS
CARBONITE BLACK PLUS 12G

GRAPHITE
GRAPHITE PPC

CARBONITE ULTRA





User Buttons

- Individually assignable:
 - Select Keyer types
 - Delegate ME or Mini ME Rows
 - Assign Memory or Custom Control Banks
 - Map direct-access Custom Controls

Delegation Rows

- Delegate any row to control Key or Aux Bus Source assignments, Memory Recalls, or Custom Controls

IPS Touch Displays

- Display Source and Custom Control macro names and icons
- Access Menus, Device Controls, TouchMap™, and much more

Panel Glow

- User-adjustable panel glow schemes and configurations for Keyers, MEs and more

Advanced Memory Keypads

- Global or Local Memory Control
- Link multiple ME, MiniME, Canvas and Chroma-Key levels to a single Memory store or recall
- Override programmed PGM, EFF Dissolve, or patented MemoryAI™ modes

On Panel Quick Menu

- Auto-follows to provide detailed control of attributes where knobs and fine-tuning are required

6 Axis Control

- New joystick design with control for 6 Axes
- Two additional buttons for Hold and Reset

Dedicated Keyer Control Per Row

- Touch Mnemonics with full keyer information and control
- Individual Keyer delegation and control buttons
- Dedicated Keyer Cut and Auto-Trans buttons
- Provides "at-a-glance" layer status

Vertical Row Display

- Full touch control
- Access row functions or TouchMap™ control
- Quickly provides menu - or function - specific operator information

Exclusive Roll Clip Feature

- Automatically roll controlled Servers or Clip players when taken to air
- User-definable pre-roll durations

Advanced Transition Control

- Industry-standard Next Transition layout
- Modify transition parameters using touch display
- Three User Buttons for quick Memory or Custom Control assignment



USB Port

- Additional easy access USB Port for the operator
- Save and load file sets to/from the frame
- Upload stills, animations and clips over the network to the Frame attached storage

On-Table Supports

- Flexible mounting options include on or in-desk alternatives
- Table supports can be removed for in-desk mounting

Network Port

- Connect to Carbonite Ultra, Carbonite Black/Black Plus or Graphite frames over TCP/IP

Display Port

- Access the built-in Linux-based DashBoard menu PC using the optional 15.6" Ross 1080p display or user-supplied monitor

USB Ports

- Four USB Type A connectors for keyboard, mouse, and optional Touch Display connection

CPU Reset Button

Service Ports

- Micro SD card slot for recovery
- Six-pin service port for Tech Support
- DIP switches for IP Address recovery, upgrade locking and other service items

PSU Inputs

- Support for dual PSU bricks or rack-mounted Ultra PSU

Touch Monitor PSU

- Power port for optional touch display

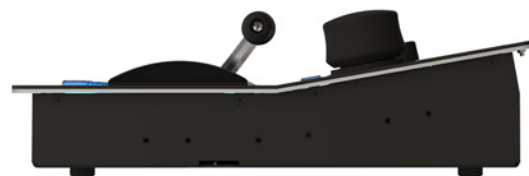
Power Button

- Protected from accidental bumping
- Accessible even when in-desk mounted



TD1C

The exceptionally compact TD1C panel is “right-sized” for rack or in-desk mounting, making it a perfect addition to a fly-pack or small mobile unit. With 15 crosspoint buttons, on-board DashBoard, and exclusive multi-function touch displays, the TD1C provides the same professional-grade toolset as other TouchDrive™ panels while saving space and power.



ON DESK

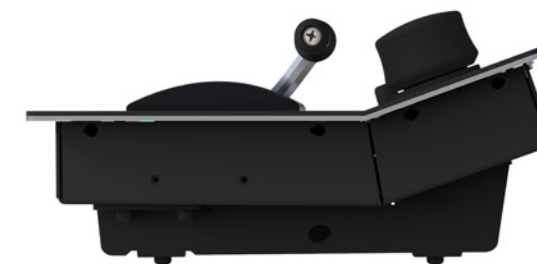


IN DESK



TD1

Like its larger cousin, the TouchDrive™ TD1 also features 15 crosspoint buttons, but only a single ME row. This compact panel provides the same functionality as larger TouchDrive™ panels, including the innovative 6-axis joystick and user-configurable buttons.



ON DESK

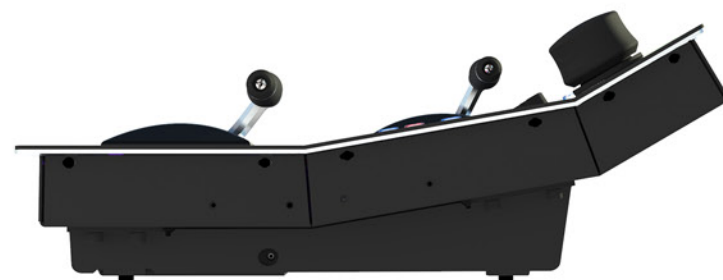


IN DESK



TD2

The TouchDrive™ TD2 features 15 buttons and 2 ME rows. With a smaller footprint than the TD2S, the TD2 still provides a Global Memory system and the ability to map Memories to individual bus row buttons for fast, accurate recall.



ON DESK

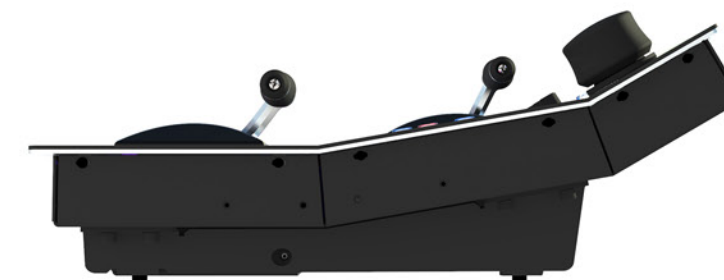


IN DESK



TD2S

The TouchDrive™ TD2S 25-button, 2-ME row panel is a more space-conscious version of the larger TD3S. Like all TouchDrive™ panels, the TD2S runs DashBoard natively, eliminating the need for an external computer.



ON DESK



IN DESK

TD3S

The beautiful new TouchDrive™ TD3S panel includes 25 crosspoint buttons and three full ME rows. Like all TouchDrive™ panels, the ergonomically designed TD3S features bright, easy-to-read multi-function touch displays. Both the TD3S and TD2S also include individual ME Effects Memory Control keypads.



ON DESK



IN DESK





ACCESSORIES

Touch Display*

A 15.6" high-resolution touchscreen is offered as an option. It is driven by touch, but USB ports are available for keyboard and mouse control. Users can opt to provide their own screen.

The TouchDrive™ panel has built-in power, display and control connections for the Touch Display

*Monitor arm is not provided.

Power Supply Unit

Users can choose to power their TouchDrive™ panels using Ultripower or regular power bricks. Using Ultripower brings benefits such as DashBoard monitoring, and the same Ultripower can be used to power both Carbonite Ultra and the TouchDrive™ panel.



AUX PANELS



RCP-ME



RCP-QE18



RCP-QE36

RCP series Ethernet-connected control panels can be directly linked to your production switcher.

Multiple panels can be connected to service a variety of positions – engineering, shading, producer, etc.



ULTRITOUCH-2



ULTRITOUCH-4

Ulritouch panels can connect to multiple devices simultaneously. DashBoard Custom Panels can be loaded for tailored production control operation.

TECHNICAL SPECS / COMPARISON TABLE

TOUCHDRIVE	TD1C	TD1	TD2	TD2S	TD3S
Direct Access Crosspoint Buttons	15	15	15	25	25
Number of Rows	1	1	2	2	3
Advanced Memory Keypad	x*	x*	x*	•	•
Theme-able Panel Glow RGB Buttons	•	•	•	•	•
Touch-enabled Display Mnemonics	•	•	•	•	•
User Buttons	18	18	18 per row	28 per row	28 per row
Joystick	•	•	•	•	•
Built-in DashBoard Computer	•	•	•	•	•
Dimensions (Length x Width)	12.91" x 17.50"	10.08" x 28.29"	16.31" x 28.29"	16.31" x 41.00"	22.55" x 41.00"
Ambient Temperature Range	Operating: 0 – 40°C (32 – 104°F) Storage: -20 – 85°C (-4 – 185°F)				
Power	73W 4.87A 15V	73W 4.87A 15V	85W 5.67A 15V	107W 7.13A 15V	165W 11A 15V
Input Voltage	100 – 120V~, 200 – 240V~, 47 – 63Hz				

*Memory row assignment allows memory recalls using key source selector buttons.





Ross Video has a complete range of technical services available to ensure that your TouchDrive™ Control Panel deployment is a success.

Operational Training can be provided at Ross Video, on-site, or over the web. Experienced Ross operators will teach your staff to get the most out of your new system and enhance your productions.

Commissioning is a service to help get your production system properly configured, connected, and installed. This service is performed by factory-trained Ross technical staff.

Technical Training can be provided at Ross Video, on-site, or over the web. Technical training will teach your engineering staff the technical details of the system you have purchased. System configuration, interfaces, databases, and routine maintenance procedures are some of the topics covered.

TouchDrive™ comes standard with a 1 year comprehensive warranty. Extended Warranties on hardware and software maintenance are available for an annual fee and also include enhanced Service Level Agreements.

Technical advice is available on-line, by telephone, or email to Ross Video – Included for the life of your system.

Contact Us

Global: +800 1005 0100

North America: 1-844-652-0645

Email: solutions@rossvideo.com

Technical Support

Emergency: +1 613 349-0006

Email: techsupport@rossvideo.com



www.rossvideo.com

ROSS VIDEO LIVING LIVE!

SOLUTIONS

Broadcast & Production
Augmented Reality & Virtual Sets
Sport & Live Events
Legislative
Mobile Production
House of Worship
Education
Corporate

PRODUCTS

Production Switchers
Motion Graphics & Clip Servers
Replay & Production Servers
Robotic & Camera Systems
Control Systems
Routing Infrastructure
Signal Processing Infrastructure
News, Live & Social Production Management
Asset Management & Storage

SERVICES

Creative Services
Mobile Production

© 2020 Ross Video Limited

Released in Canada.

No part of this brochure may be reproduced in any form without prior written permission from Ross Video Limited.

This brochure is furnished for informational use only. It is subject to change without notice and should not be construed as commitment by Ross Video Limited. Ross Video Limited assumes no responsibility or liability for errors or inaccuracies that may appear in this brochure.

TouchDrive_Brochure_201105_a

ROSS[®]
LIVING LIVE!